

Section 1: Codecs

Zephyr iPort MPEG Gateway



Zephyr iPort

[Zephyr iPort MPEG Gateway](#)

P/N 2001-00237

Zephyr iPort enables broadcasters to transport multiple channels of stereo audio across IP networks with guaranteed QoS, such as T1 and T3 connections, MPLS networks, et cetera. Can be configured for use either as a codec to transport eight stereo bi-directional MPEG streams, or as an MPEG encoder for up to 16 stereo output streams. Connects to your Axia Network using a single CAT-6 cable for all I/O — or pair with an Axia AES or Analog Audio Node for use as a standalone multiple-stream codec. Requires one unused 100Base-T Ethernet port for connection to an Axia network. Auto-sensing power supply, 90VAC to 240VAC, 50 Hz to 60 Hz. 100 Watts. Rackmount, 2RU.

Zephyr /IP



Zephyr/IP 2RU



Zephyr/IP 3RU

[Zephyr/IP Studio Version](#)

P/N 2001-00264 2RU

P/N 2001-00238 3RU

Zephyr/IP offers high quality, reliable, audio-over-Internet for remote broadcasts and connecting remote studios. Featuring Livewire, AES/EBU and stereo analog audio I/O with 24 bit AD/DA converters. The Z/IP transmits and receives high quality, stereo or mono audio using any of several coding algorithms, including AAC-ELD at bitrates from 16 to 256 kbps. Reliability over non-QoS IP connections is enhanced using Telos' exclusive Agile Connection Technology (ACT). The free, private Z/IP server allows easy connections to other Z/IP units through firewalls using user-friendly names. The live status of other Z/IPs is displayed in a speed dial list. Connect via wired Ethernet or wireless with approved USB Wi-Fi and 3G cellular devices.



Zephyr/IP Mixer

[Zephyr/IP Mixer](#)

P/N 2001-00250

The new Z/IP Mixer combines the versatility of the Zephyr/IP with the utility of a digital four-channel stereo mixer, all in a rugged, road-ready portable chassis. Featuring Livewire I/O with 24 bit AD/DA converters and a 4-input analog mic/line mixer with 6 headphone inputs. The Z/IP transmits and receives high quality, stereo or mono audio using any of several coding algorithms, including AAC-ELD at bitrates from 16 to 256 kbps. Reliability over non-QoS IP connections is enhanced using Telos' exclusive Agile Connection Technology (ACT). The free, private Z/IP server allows easy connections to other Z/IP units through firewalls using user-friendly names. The live status of other Z/IPs is displayed in a speed dial list. Connect via wired Ethernet or Wireless with approved USB Wi-Fi and 3G cellular devices. 2RU.

Zephyr Xstream Digital Audio Network Transceivers



Zephyr Xstream

[ZEPHYR XSTREAM – Rack-Mount Studio Version](#)

2001-00075 with ISDN, X.21/V.35 interface, and Ethernet
2001-00076 with ISDN and Ethernet
2001-00077 with Ethernet and X.21/V.35 interface
2001-00074 with Ethernet only

World's leading ISDN codec, compatible with the widest variety of third party codecs. Includes MPEG-AAC and AAC-LD, Layer 2, Layer 3, G.722 coding, AES/EBU, Livewire IP, ISDN TA with integral NT1 supports worldwide compatibility without changing software. Features full duplex stereo operation of up to 20 kHz audio on a single ISDN line; broadcast quality mono audio at 15 kHz or 20 kHz is possible on a single ISDN "B" channel or other 56/64 kbps channel. Remote Control over RS-232 or Ethernet. Single headphone output. 2RU.



Zephyr Xstream MXP

[ZEPHYR XSTREAM MXP – Portable Mixer Version](#)

2001-00079 with ISDN, X.21/V.35 interface, and Ethernet
2001-00080 with ISDN and Ethernet
2001-00081 with Ethernet and X.21/V.35 interface
2001-00078 with Ethernet only

World's leading ISDN codec, compatible with the widest variety of third party codecs. Housed in a rugged shock resistant case helps stand up to the rigors of the road. Comes equipped with a flip up stand for best viewing angle. Includes MPEG4-AAC and AAC-LD, Layer 2, Layer 3, G.722 coding, Livewire IP. Balanced inputs/outputs, ISDN TA with integral NT1 supports worldwide compatibility without changing software. Features full duplex stereo operation of up to 20 kHz audio on a single ISDN line; broadcast quality mono audio at 15 kHz or 20 kHz is possible on a single ISDN "B" channel or other 56/64 kbps channel. Remote Control over RS-232 or Ethernet. Four-channel stereo mixer includes selectable digital processing by Omnia.



Zephyr Xstream MX

[ZEPHYR XSTREAM MX – Rack-Mount Mixer Version](#)

2001-00083 with ISDN, X.21/V.35 interface, and Ethernet
2001-00084 with ISDN and Ethernet
2001-00085 Ethernet and X.21/V.35 interface
2001-00082 with Ethernet only

World's leading ISDN codec, compatible with the widest variety of third party codecs. Includes MPEG4-AAC and AAC-LD, Layer 2, Layer 3, G.722 coding, Livewire IP. Balanced inputs/outputs, ISDN TA with integral NT1 supports worldwide compatibility without changing software. Features full duplex stereo operation of up to 20 kHz audio on a single ISDN line; broadcast quality mono audio at 15 kHz or 20 kHz is possible on a single ISDN "B" channel or other 56/64 kbps channel. Remote Control over RS-232 or Ethernet. Four-channel stereo mixer includes selectable digital processing by Omnia. 2RU.

Zephyr Xport Digital Audio Transceiver



Zephyr Xport

[XPORT](#)

P/N 2001-00010 POTS ONLY

P/N 2001-00122 POTS + ISDN

Portable unit allows use of an ordinary analog telephone line in the field to connect with the Zephyr Xstream ISDN codec at the studio. Xport features the highest fidelity low-bitrate coding available, AAC plus (MPEG AAC + Spectral Band Replication enhancement). Features include: Mixer with mic and line inputs, internal power supply and selectable DSP processing by Omnia. Can be upgraded to POTS & ISDN using optional ISDN interface, supporting AAC-LD and G.722.

The POTS+ISDN version 2001-00122 includes ISDN Interface with Internal NT-1. Includes RJ-45 "S" for use worldwide and RJ-11 "U" connectors for use in the USA and Canada.

[Internal ISDN/TA Card for Xport](#)

P/N 1701-00056 ISDN With Internal NT1.

Includes both "S" and "U" connectors. Optional ISDN card upgrades Xport for use with both ISDN & POTS for maximum flexibility.

[Auxiliary Interface Cable](#)

P/N 2091-00034

Cellular handset audio cable. ¼" TRS to 2.5mm TRS. Connects Xport to standard 2.5mm headset/mic jack.

Zephyr Family Accessories

[V.35/X.21 Network Data Interface Card for Zephyr Xstream](#)

P/N 1701-00006

For Zephyr Xstream. Requires 2091-00023 or 2091-00024 Data Cable (see below). Supports data rates up to 384 kbps.

[Internal ISDN Terminal Adaptor Card for Zephyr Xstream](#)

P/N 1701-00153

For Zephyr Xstream. Converts any Zephyr Xstream not previously equipped with ISDN interface. Includes both "S" and "U" interface.

[V.35 Data Cable](#)

P/N 2091-00023

V.35 dual channel for Zephyr and Zephyr Xstream. 18 inches, 45.7cm, with all connectors attached.

[X.21 Data Cable](#)

P/N 2091-00024

X.21 dual channel Zephyr and Zephyr Xstream. 18 inches, 45.7cm, with all connectors attached.

[Replacement Outboard Power Supply for Zephyr Express](#)

P/N 2091-00006

Switching supply; 110v/220v.

[Internal ISDN Terminal Adapter for Zephyr and Zephyr Express](#)

P/N 1701-00082

For Zephyr and Zephyr Express. Converts 9X01 to 9X00 Zephyr. Includes both "S" and "U" interfaces.

Section 2: Hybrid Talk Show Systems

Nx6 Digital Talk Show Systems NEW PRODUCT & PACKAGES	
 <p><i>Nx6 Package</i></p>	<p><u>Nx6 Talk Show System Package</u> Nx6 POTS Package Nx6 ISDN Package Nx6 POTS + AES Package Nx6 ISDN + AES Package</p> <p>The Nx6 package includes one Nx6, one Desktop Director 2001-00071, and one Assistant Producer Software 3001-00001. Order additional control surfaces separately. To order a package, simply choose the version of the Nx6 below.</p>
 <p><i>Nx6</i></p>	<p><u>Nx6 POTS Talk Show System</u> P/N 2001-00265 6 lines POTS + Livewire and Analog I/O. For Worldwide Use. P/N 2001-00266 6 lines POTS + Livewire and AES I/O. For Worldwide Use.</p> <p><u>Nx6 ISDN Talk Show System</u> P/N 2001-00267 For use in Canada and USA 3* ISDN U (2B1Q 2-wire) + Livewire and Analog I/O. P/N 2001-00268 Worldwide use outside of North America 3* ISDN S (4-wire) + Livewire and Analog I/O. P/N 2001-00269 For use in Canada and USA 3* ISDN U (2B1Q 2-wire) + Livewire and AES I/O. P/N 2001-00270 Worldwide use outside of North America 3* ISDN S (4-wire) + Livewire and AES I/O.</p> <p>Equipped with six lines and four advanced hybrids that can be used in a single studio, or split across two studios. When analog outputs are used, the callers are mixed down to two feeds, while still making use of all hybrids. Standard balanced analog audio connection via XLRs or via Axia Livewire audio-over-Ethernet. AES option available. The Nx6 may be ordered with 6 POTS (analog) telephone jacks, or 3 ISDN connections (with two BRI channels per connector, giving six digital lines.).</p> <p>* Each ISDN line has two B channels for 2 lines or "dial tones."</p>
	<p><u>Nx6 to Nx12 Upgrade Kit</u> P/N 2011-00065 with POTS Card P/N 2011-00066 with ISDN Card for use in Canada and USA P/N 2011-00067 with ISDN Card for outside North America</p> <p>The upgrade converts an Nx6 to an Nx12, providing access to 12 lines, through POTS, ISDN or a combination of the two.</p>

Nx12 Digital Talk Show Systems **NEW PRICING & PACKAGES**



Nx12 Package

[Nx12 Talk Show System Packages](#)

Nx12 POTS Package

Nx12 ISDN Package

Nx12 POTS + AES Package

Nx12 ISDN + AES Package

The Nx12 package includes one Nx12, one Desktop Director 2001-00071, and one Assistant Producer Software 3001-00001. Order additional control surfaces separately. To order a package, simply choose the version of the Nx12 below.



NX12

[Nx12 POTS Talk Show System](#)

P/N 2001-00208

12 lines POTS + Livewire and Analog I/O. For Worldwide Use.

P/N 2001-00211

12 lines POTS+ Livewire and AES I/O. For Worldwide Use.

[Nx12 ISDN Talk Show System](#)

P/N 2001-00210 For use in Canada and USA

6* ISDN U (2B1Q 2-wire) + Livewire and Analog I/O.

P/N 2001-00209 Worldwide use outside of North America

6* ISDN S (4-wire) + Livewire and Analog I/O.

P/N 2001-00213 For use in Canada and USA

6* ISDN U (2B1Q 2-wire)+ Livewire and AES I/O.

P/N 2001- 00212 Worldwide use outside of North America

6* ISDN S (4-wire)+ Livewire and AES I/O.

[Nx12 POTS+ISDN Talk Show System](#)

P/N 2001-00215 For use in Canada and USA

6 lines POTS+ 3* ISDN U (2B1Q 2-wire) + Livewire and Analog I/O.

P/N 2001- 00214 Worldwide use outside of North America

6 lines POTS + 3* ISDN S (4-wire) +Livewire and Analog I/O.

P/N 2001-00217 For use in Canada and USA

6 POTS+ 3* ISDN U (2B1Q 2-wire)+ Livewire and AES I/O.

P/N 2001-00216 Worldwide use outside of North America

6 POTS+ 3* ISDN S (4-wire) + Livewire and AES I/O.

The Nx12 is an advanced 12-line telephone system featuring four independent digital hybrids. Using the Telos Desktop Director or Assistant Producer, callers can be managed in separate screened and hold queues, and put on the air either on their own hybrid, or 'button mashed' for quick on-air conferencing. The Nx12 can also be configured for two studio operation, giving each studio independent queues and their own two hybrids. Separate studios may share or split lines. An available internal mix-minus (required with analog outputs) saves console space while still utilizing individual hybrids. Supports Livewire IP-Audio over Ethernet. Can be ordered with AES/EBU or Analog I/O. Each hybrid has an improved AGC and noise gate by Omnia, plus new long-tail-echo cancellation for VoIP and Cellular callers. Support for ISDN (S or U) and/or universal POTS (see above).

* Each ISDN line has two B channels for 2 lines or "dial tones."

Digital Talk Show System Control Interfaces



Desktop Director

Desktop Director

P/N 2001-00071

Used for line selection of Nx12, Nx6, 2x12 or 2101 systems conferencing, screening calls, dialing and other talk show functions. Comes with handset and separate connection for optional 3rd-party call screener's headset. Nx12 and Nx6 support two Desktop Directors standard, expandable to eight with a Power Supply 2091-00001 (see below).



Extended Desktop Director

Extended Desktop Director

P/N 2001-00072

Used for extended line capacity of Nx12 or 2101 systems. Provides line status for and permits control of up to 12 incoming calls assignable to four hybrids. Includes built-in acoustically isolated speakerphone, handset and headset port.



Call Controller

Call Controller

P/N 2001-00143

Used for line selection of the Nx12, Nx6 or 2x12. This cost effective and compact control option provides call screening and line status for control of up to 12 lines and 2 hybrids. Connect the Call Controller to an ordinary POTS telephone of your choice (not included) for screener or studio telephone operation.

Digital Talk Show System Accessories



Assistant Producer for Nx12 & Nx6

Assistant Producer v 3.5

P/N 3001-00001 Assistant Producer v3.5 For Nx12 and NX6

Call screening software. CD-ROM includes Assistant Producer for use with Nx12, NX6, & 2x12 Talk Show Systems. Operates with Microsoft Windows™. Provides instant communication between producers and hosts with detailed on-screen line and caller status, allows remote screening/supervision of talk shows via LAN or WAN.

To update to the latest version, visit the Telos Support page www.telos-systems.com/support/software.htm or contact Telos Support at support@telos-systems.com.

Desktop Director Power Supply

P/N 2091-00001

For 2001-00071 Desktop Director, 2001-00072 Desktop Director Extended, 2001-00143 Call Controller. Power supply(s) is required when using more than two Desktop Directors and/or Call Controllers. This power supply is also required when a Desktop Director cable is in excess of 250 feet (63.5m). Includes all cabling needed to connect power supply with Nx12, Nx6, 2x12 or 2101 I/O.

AES Option for Nx6 or Nx12

P/N 1701-00149 AES Daughter Card

Converts the mono analog XLR inputs and outputs on an Nx6 or Nx12 to AES/EBU digital audio format. With two channels of audio on each connector, the internal mix minus can be disabled to allow individual hybrid level control on a mixing console.

ONE x Six Talk Show Systems



ONE x SIX

ONE-x-Six

P/N 2001-00022

With integrated Telos ONE Digital Hybrid. Manages up to six POTS lines; features conferencing capability with additional Telos ONE hybrid. Requires at least one 2001-00023 Switch Console (not included, order separately) powers two Switch Consoles. 1 RU.



Switch Console

Switch Console

P/N 2001-00023

Used for line selection, conferencing, dialing and other talk show functions including line status. ONE-x-Six supports a maximum of four Switch Consoles with additional power supplies (See below).

ONE x Six Digital Talk Show Systems Accessories



Assistant Producer for ONE x Six

Assistant Producer For ONE-x-Six

P/N 3001-00003

Call screening software. CD-ROM includes Assistant Producer. Operates with Microsoft Windows™. Provides instant communication between producers and hosts with detailed on-screen line and caller status, allows remote screening/supervision of talk shows via LAN or WAN.

We cannot provide refunds for non-defective software. Defective software can be returned for replacement only.

Switch Console Local Power Supply

P/N 2091-00003 220V/50Hz

P/N 2091-00002 110V/60Hz

Local Power Supply—For Switch Console 2001-00023. Needed when Switch Console cable is in excess of 75 feet (22.8m) or when more than two Switch Consoles are needed or when console-mounted version is used.

Modular Shielded Cable




P/N 1292-00020 25 foot, (7.62 m)


P/N 1292-00021 50 foot, (15.2 m)

P/N 1292-00022 75 foot, (22.9 m)

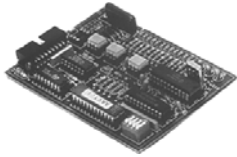
6-Conductor cable for Switch Console. Male/male RJ-11-style connectors.

Section 3: Telephone Hybrids

Single and Dual Telephone Line Hybrids	
 <p><i>ONE.modem</i></p>	<p><u>ONE Digital Hybrid Modem Case version</u> P/N 2001-00025 110-220V</p> <p>Single line digital POTS hybrid. Can also operate with 1A2 Interface Module or Direct Interface Module. AGC, caller ducking, mic/line inputs, two outputs. Use part numbers 2091-00007 (SRMP) or 2091-00008 (DRMP) rackmount kits. Can operate with Telos Auto Answer boards, see below.</p>
 <p><i>ONE.rackmount</i></p>	<p><u>ONE Digital Hybrid Rackmount Version</u> P/N 2001-00027</p> <p>Single line digital POTS hybrid. Can also operate with 1A2 Interface Module or Direct Interface Module. AGC, caller ducking, mic/line inputs, two outputs. Can operate with Telos Auto Answer boards. 1 RU.</p>
 <p><i>ONE plus ONE</i></p>	<p><u>ONE plus ONE</u> P/N 2001-00029</p> <p>Dual Digital POTS Hybrid can also operate with 1A2 Interface Module or Direct Interface module. Two Telos ONE hybrids rack mounted together with a built-in mix-minus matrix for full duplex conferencing. Can also be used as two independent hybrids. Can operate with Telos Auto Answer boards. 1 RU.</p>

Telephone Hybrid Accessories	
	<p><u>Replacement Telco ISDN Card for TWO</u> P/N 1701-00086</p> <p>S/U card permits connection of one* ISDN BRI line. *One ISDN BRI line = two B channels (or two dial tones).</p>
	<p><u>Rack Mount Panels</u> P/N 2091-00007 Single unit P/N 2091-00008 Dual unit</p> <p>Permits one or two Telos ONE Modem Case or Telos Link to be rack mounted.</p>
	<p><u>Replacement Outboard Power Supply for ONE</u> P/N 2091-00004</p> <p>Universal wall wart style power supply for 110V to 220V.</p>
 <p><i>Basic Auto Answer Board</i></p>	<p><u>Basic Auto Answer Board</u> P/N 1701-00110</p> <p>Used for Telos ONE and ONE plus ONE. Enables hybrid to automatically answer incoming call and hang up on loop current drop or reversal (CPC-calling party control). CPC not available in all countries or private PBXs.</p> <p>P/N 2001-00098 Telos ONE Modem Case with BAA Board installed</p> <p>P/N 2001-00096 Telos ONE Rackmount with BAA Board installed</p> <p>P/N 2001-00094 One plus One with two BAA Boards installed</p>

Telephone Hybrid Accessories, Continued



Super Auto Answer Board

[Super Auto Answer Board](#)

P/N 1701-00087 Standard

Contact Telos for information about specific versions of SAA boards for your application and country. Same as Basic Auto Answer, but adds sophisticated capabilities such as remote control capability for connect, drop and auto-answer function. Releases line when recall tone is present, for lines without CPC. Open collector outputs from integral DTMF decoder.

P/N 2001-00097

Telos ONE Modem Case with SAA Board installed

P/N 2001-00095

Telos ONE Rackmount with SAA Board installed

P/N 2001-00092

One plus One with two SAA Boards installed

Section 5: Telephone to Intercom Interface

Intercom Hybrid Interface



Link

[LINK](#)

P/N 2001-00032 110-220V

Permits connection of POTS line to 2-wire production intercom systems. Compact modem case. Use part numbers 2091-00007 (SRMP) or 2091-00008 (DRMP) rack mount kits for rack mounting.

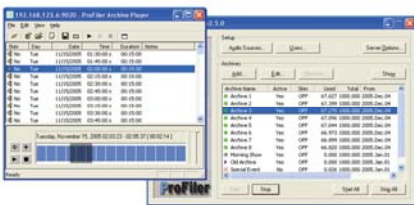
[Replacement Outboard Power Supply for LINK](#)

P/N 2091-00030

Universal wall wart style power supply for 110V to 220V

Section 6: Program Skimming, Archiving, & Logging

Telos Profiler Software



Profiler

[Telos Profiler Automated Program Archiving](#)

P/N 2201-00017

Enables radio stations to make MP3 audio logs of daily programs. Includes a Telos balanced input PCI audio card bundled with CD-ROM software to record, manage and play back archived audio files. Recording software runs under Windows 2000 or NT4; playback software runs under Windows NT, Win98 or greater. Record mode can be set for logging, skimming, or combination of both. Logged audio may be auditioned remotely via LAN, WAN, or Internet. Hardware requirements; NT4/Win2K on a Pentium-II/400 with minimum 128Mb RAM and 30GB storage. Includes professional Telos PCI audio card with balanced inputs/outputs and contact closure inputs to activate skimming function.

[Cable DB9 to 4 XLR – Profiler Interface](#)

P/N 2091-00060

Ready-made cable adapts the Profiler sound card's DB9 audio connector into 4 XLR connectors, 2 male and 2 female.

Section 7: Control Surfaces

OEM Control Surface Electronic Assemblies



*Console Director**

[Console Director Suitable for 2101, Nx12, Nx6 & 2x12](#)

P/N 2001-00052

Console Director -48V Long 12 Line Control Panel.

Dual 12 line control electronics for Nx12, 2x12 and 2101 telephone systems. Supplied as complete electronic assembly for installation in sheet metal supplied by other vendors.

[Console Director Suitable for 2101, Nx12, Nx6 & 2x12](#)

P/N 2001-00086

Console Director -48V Short 12 Line Control Panel.

Dual 12 line control electronics for Nx12, 2x12 and 2101 telephone systems. Supplied as a complete electronic assembly for installation in Harris Radio Mixers.

[Console Director Suitable for 2101](#)

P/N 2001-00121

Console Director -48V 24 Line Control Panel.

Dual 24 line control electronics for 2101 telephone systems. Consists of two 12 Line Console Director-48V LONG style and line expansion software upgrade. Supplied as complete electronic assembly for installation in sheet metal supplied by other vendors.

[Console Director Suitable for 2101, Nx12, Nx6 & 2x12](#)

P/N 2001-00089

Console Director -48V Horizontal 12 Line Control Panel.

Dual 12 line control electronics for Nx12, 2x12 and 2101 telephone systems. Supplied as a complete electronic assembly for installation in Harris/PR&E Turrets.

[Console Director For Legacy Equipment](#)

P/N 2001-00087

Console Director +12V Long 10 Line Control Panel.

Dual 10 Line control electronics for Legacy Telos telephone interface systems. Supplied as complete electronic assembly for installation in sheet metal supplied by other vendors.

*Supports 10 Line, 2 hybrid, operation only.

[Console Director For Legacy Equipment](#)

P/N 2001-00088

Console Director +12V Short 10 Line Control Panel.

Dual 10 Line control electronics for Legacy Telos telephone interface systems. Supplied as complete electronic assembly for installation in sheet metal supplied by other vendors.

[Console Director Suitable for Legacy Equipment](#)

P/N 2001-00090

Console Director +12V Horizontal 10 Line Control Panel.

Dual 10 Line control electronics for Telos 1A2, Direct Interface Module and ONE-x-Six telephone interface systems. Supplied as a complete electronic assembly for horizontal installation in Harris/PR&E Turrets.

* Console directors do not include sheet metal shown in photo.